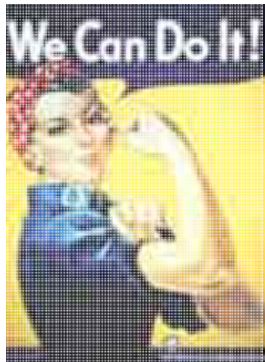


Maritime History Center for Working Families

First publicly-funded child development center in the United States



Part of Rosie the Riveter WW II Home Front National Historical Park

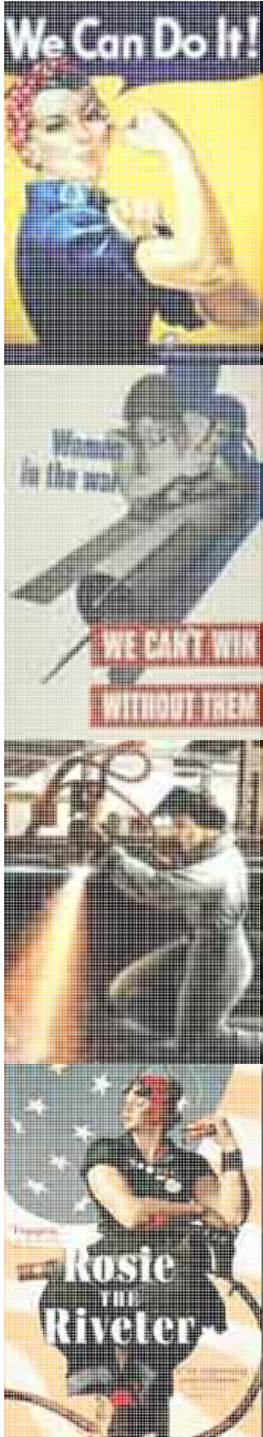


Maritime History Center for Working Families

“failure to provide adequate care for the children of working mothers...is probably the gravest home problem we face.

For it would be folly to win the war—and find that we had lost our children.”

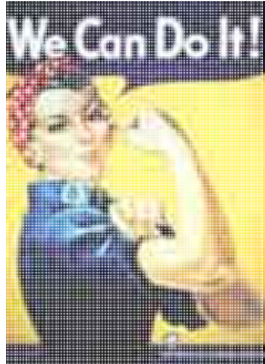
Fore and Aft – Kaiser Shipyard Newsletter



What is the Rosie the Riveter WW II Home Front National Park?

Mandated by Congress to:

- Tell the **National** WWII Home Front story
 - Celebrate women's contributions to the Home Front effort
 - Preserve and protect park resources w/ Partners
 - **National Park Service**
 - **City of Richmond**
 - **Contra Costa County**
 - **Community organizations**
-
-



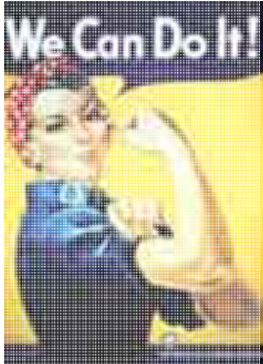
Why is the Park Located in Richmond?

- Most extant U.S. wartime infrastructure
- Location of unique advances in child care, labor, civil rights, and health care that endure today
- Kaiser shipyards led the world in ship construction



Photo: Ellen Gailing

Park Sites Tell about the Entire Home Front Effort



Rosie the Riveter World War II Home Front National Historical Park

Maritime
History Center
for Working
Families



Park Sites

1. Rosie the Riveter Memorial
2. Shipyard Stories at Barbara & Jay Vincent Park
3. S.S. Red Oak Victory
4. Ford Assembly Building and Oil House
5. Richmond Shipyard #3
6. Kaiser Field Hospital
7. Richmond Fire Station 67A
8. Child Development Centers Ruth C. Powers Maritime
9. Atchison Village
10. Bay Trail & Esplanade
11. Sheridan Observation Point
12. Shirnada Friendship Park
13. Lucretia Edwards Park

Park Boundary 

Buildings 

Memorial 



National Park Service
U.S. Department of the Interior
www.nps.gov/rori

Richmond, California
© 2010 National Park Service





Nystrom Neighborhood

WWII Home Front Living Museum

**MARITIME HISTORY CENTER
FOR WORKING FAMILIES**

This Project

NYSTROM SCHOOL

\$20 million

Rehabilitation/Reconstruction

FUNDED

**MARTIN LUTHER KING JR.
PARK**

\$2.5 million Rehabilitation

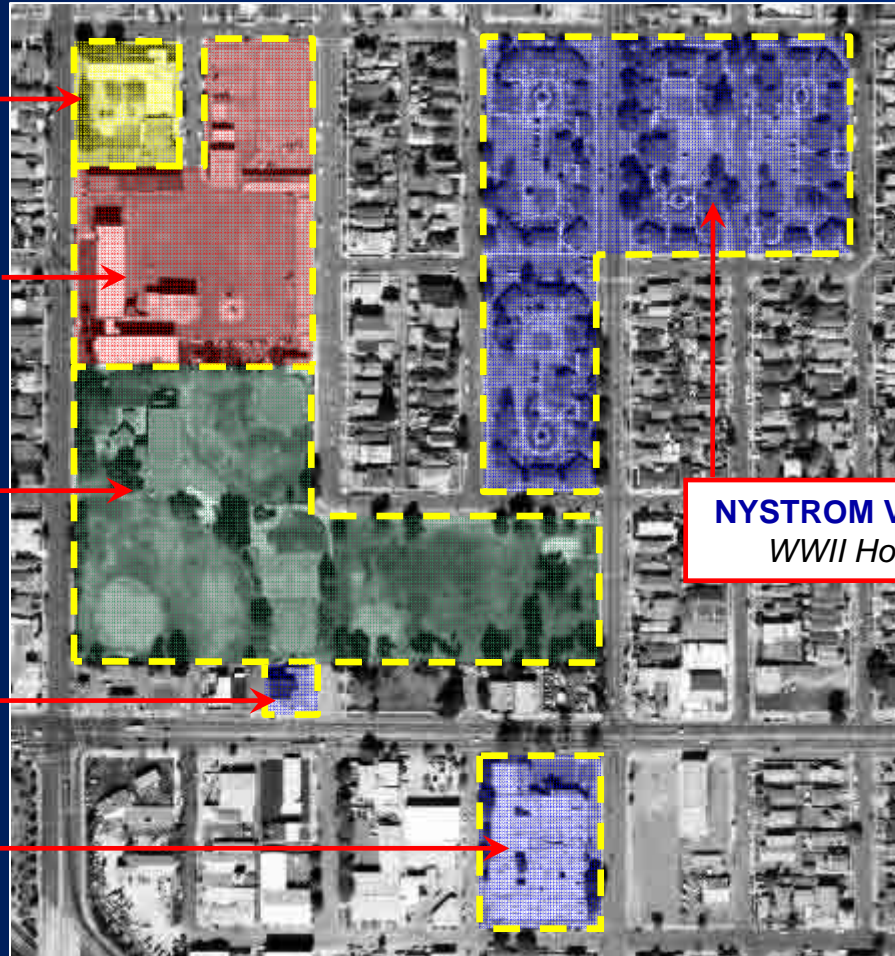
FUNDED

FIRE STATION NO. 67A

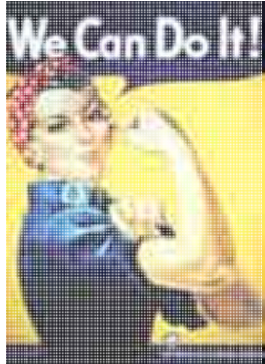
National Historical Park Site

KAISER FIELD HOSPITAL

National Historical Park Site



NYSTROM VILLAGE
WWII Housing



Our Project: **Rehabilitation of former Maritime Child Development Center**



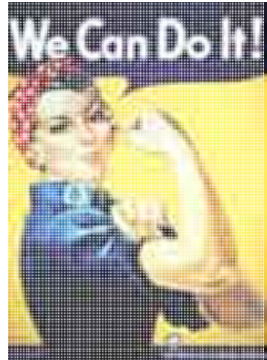
Original Architect's Rendering, Courtesy Richmond Museum of History



Public-Private Partnership Project

- Building is part of the National Historical Park, by act of Congress
- Owned by Contra Costa County
- Sponsored by Rosie the Riveter Trust and East Bay Community Foundation

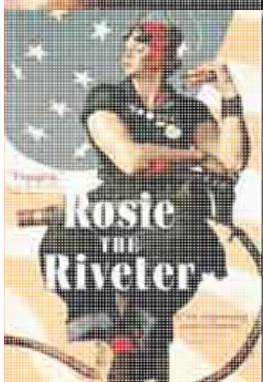
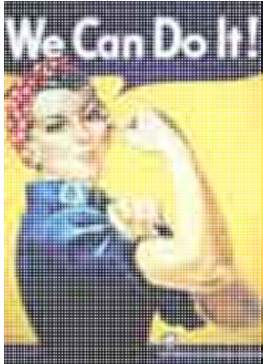


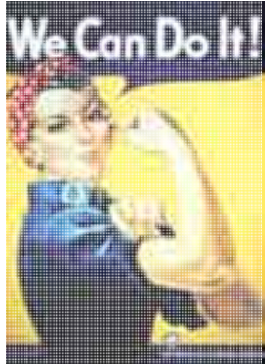


Maritime History Center for Working Families: Then and Now



Maritime History Center for Working Families: Then and Now



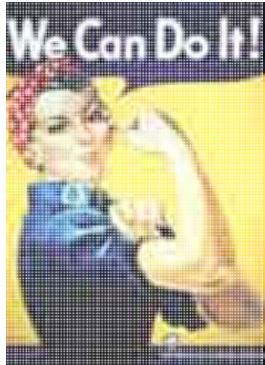


Why is Our Story Compelling?

- Women and minorities critical to wartime industrial production



Dorothea Lange Collection, Oakland Museum of California

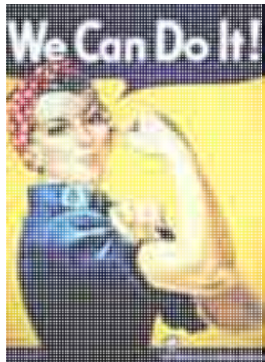


Why is Our Story Compelling?

- Maritime Center freed women with children to work outside the home



Dorothea Lange Collection, Oakland Museum of California

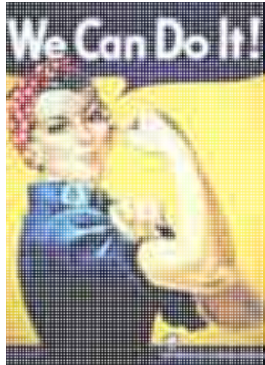


Why is Our Story Compelling?

- Innovative educational program by noted U.C. Berkeley professor Catherine Landreth



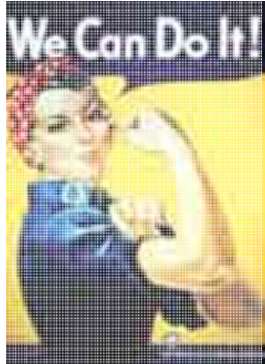
Dorothea Lange Collection, Oakland Museum of California



How Our Story Will Be Told

- Museum provides on-site, hands-on California history for school children





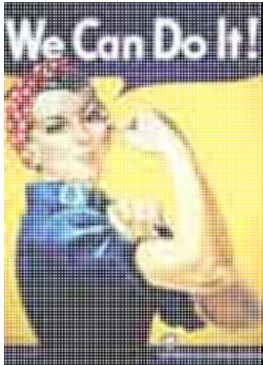
How Our Story Will Be Told

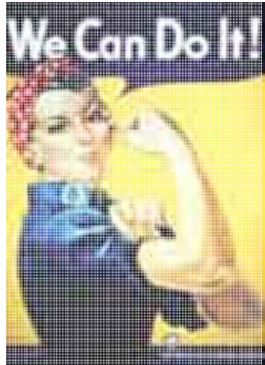
- Restored historic classrooms with original furniture and toys
- Audio/visual oral history program



How Our Story Will Be Told

- Historic photo exhibits

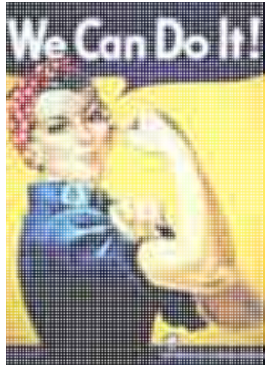




How Our Story Will Be Told

- History museum and research center
- Archives available on website

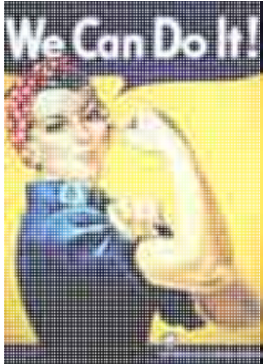




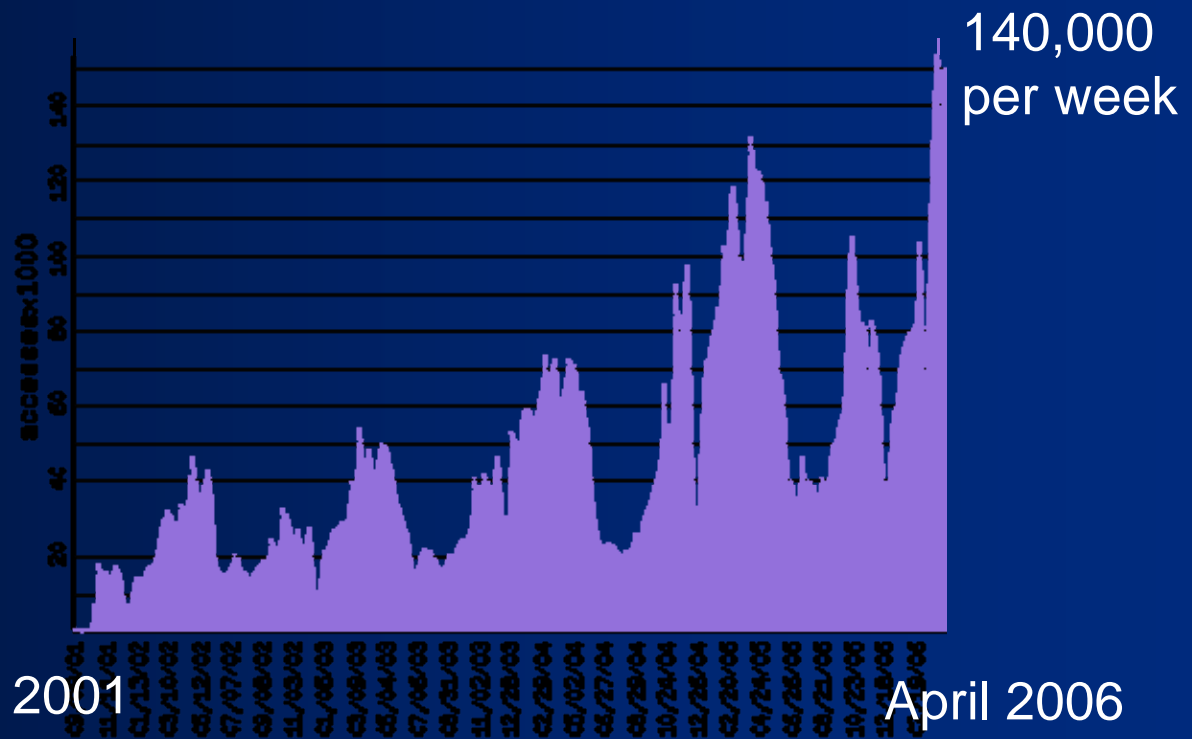
National Park Service Official Visitation Projections

- Park: up to 1.5 million annually
- Maritime Center: 30,000 to 50,000

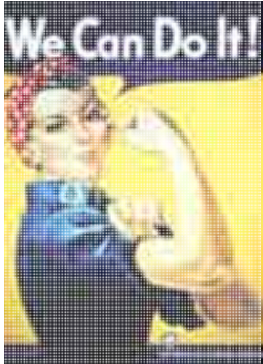




10 million Hits to Rosie the Riveter Trust Web Site

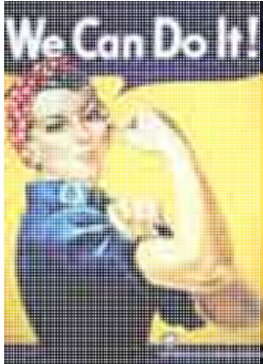


Rosie the Riveter Trust Web Site Hits



Current Condition of the Center

- Threatened and Endangered!
 - Vacant and abandoned
 - Water damage
 - Not seismically safe
 - Mold, asbestos and lead-based paint
 - Not ADA-compliant
-
-



What Will This Project Accomplish?

- Adaptive and compatible use of historic building
 - Fully rehabilitate structure, including restored historic classrooms filled with original furniture and toys
 - Provide unique visitor experience and extensive interpretive exhibits
-
-



Cost Allocation Includes Over 50% Local Match

Match (East Bay Community Foundation, Contra Costa County, National Park Service, WCCUSD)

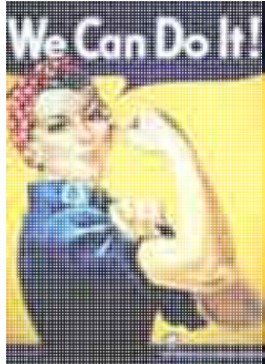
\$2,393,750

CCHE Grant

\$2,377,113

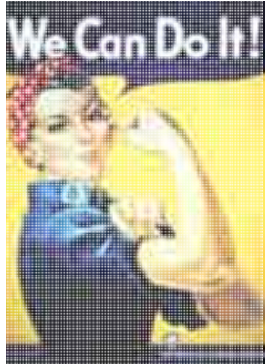
TOTAL

\$4,670,863



Why This Project Should Receive Funding

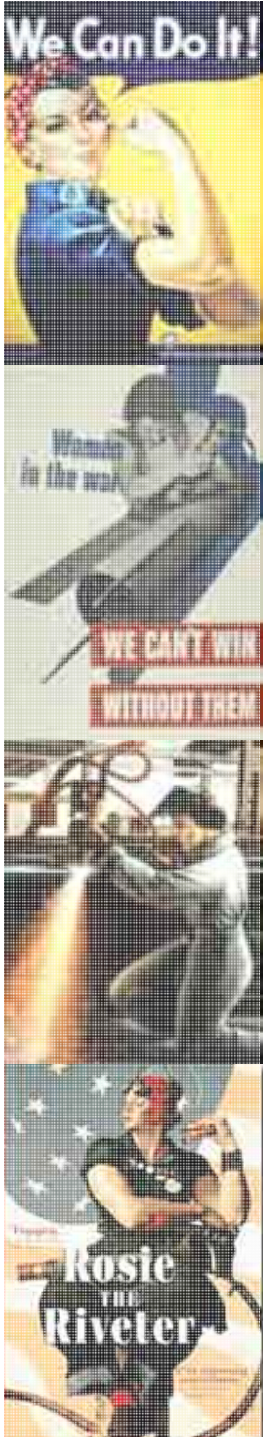
- Interprets California's great role in WW II (The "Second Gold Rush")
 - Documents social, demographic and other changes (health care, child care, civil rights, labor, industry).
-
-



Why This Project Should Receive Funding

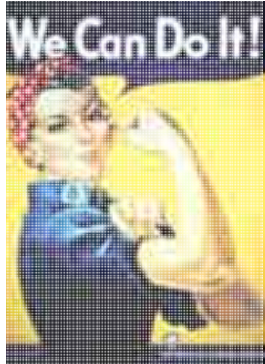
- Recalls **ordinary people**, including women and minorities, achieving **extraordinary results** that changed California and the world





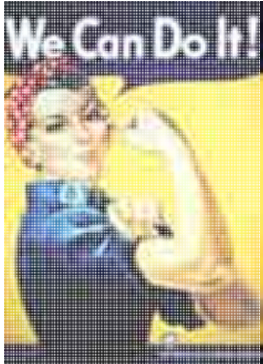
Why This Project Should Receive Funding

- Illustrates remarkable example of California's economic strength
 - Identifies contributions of diverse ethnic communities, including:
 - African-Americans
 - Asian-Americans
 - Native Americans
 - Latinos
-
-



Why This Project Should Receive Funding

- Preserves, documents, interprets and enhances an understanding of a California (and American) history story that is *absent or under-represented in existing historical parks, monuments and museums.*
-
-



Questions?

PRESENTATION TEAM

Tom Butt, FAIA
President, Rosie the Riveter Trust

David Blackburn
Chief of Interpretation, Rosie the Riveter WW II Home Front National Historical Park

Rick Smith
Deputy Superintendent, Rosie the Riveter WW II Home Front National Historical Park

Al Prince
Contra Costa County Community Services Department

Jayne Williams
East Bay Community Foundation

