

National Park Service Reorganizes Contra Costa County Units with Headquarters in Richmond – and Other Rosie News

Tom Butt, Richmond City Council Member

May 29, 2005

The National Park Service has reorganized, under a single superintendent located in Richmond, its entire Contra Costa County organization, which consists of four units: Rosie the Riveter World War II/Home Front National Historical Park, John Muir National Historic Site, Eugene O'Neil National Historic Site and Port Chicago Naval Magazine National Memorial.

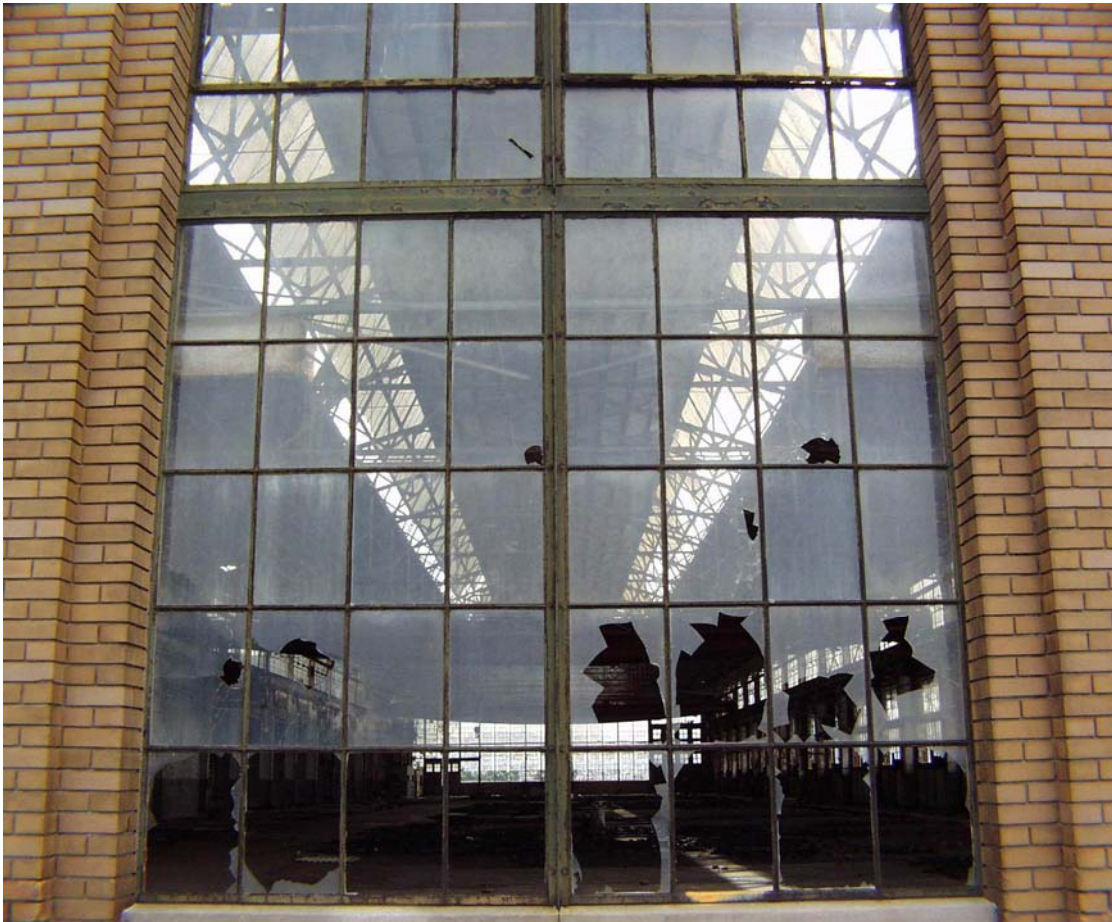


Signing the Cooperating Association Agreement between Rosie the Riveter Trust and the National Park Service on April 13, 2005, are (left to right) John Gioia, Rick Smith, Tom Butt, Rosemary Corbin, Howard Levitt and Mindell Penn. Levitt and Smith are with the National Park Service, and the others are board members of Rosie the Riveter Trust. The Trust is the official non-profit partner for the Park.

The General Superintendent located in Richmond will be upgraded to a GS-14, and a number of highly qualified applicants are currently vying for the job, with selection expected as soon as mid-June 2005. The larger staff will provide greater flexibility in applying resources to all the Contra Costa County parks as well as expanding programming and providing greater operational efficiency. A deputy superintendent will be located in Martinez, responsible for the day to day operation of all four areas. Howard

Levitt, currently Chief of Interpretation for Golden Gate National Recreation Area, on loan, is currently Acting Superintendent for Rosie the Riveter World war II/Home Front National Historical Park, spanning the gap left when former Superintendent Judy Hart retired and the next permanent superintendent will be appointed.

The annual budget for Rosie the Riveter World war II/Home Front National Historical Park has been increased from an embarrassing \$179,000 to a slightly more respectable \$485,000, but perhaps more importantly, the reorganization will enable a Park Service Planner and Cultural Resources Specialist to be added to the Richmond staff as well as upgrading of the Park Ranger position. Other resources, such as a Volunteer Coordinator, will be available to “Rosie” as well as the other Contra Costa units.



The permanent Visitor Center Rosie the Riveter World war II/Home Front National Historical Park will be located in the Craneway of the rehabilitated former Ford Assembly Plant.

The National Park Service has now officially approved a \$4.5 million funding package for the Visitor Center to be located in the Ford Assembly Plant. This will enable detailed planning to start this year.

The [Red Oak Victory](#) has been moved to Shipyard 3, where it will soon undergo a \$1 million facelift. The ship is accessible to the public and can be reached via a new access road from the south end of Canal Boulevard.

Design has been completed for foundation work to enable the historic Whirley Crane currently located at Richmond Levin Terminal to be moved to Shipyard 3 for eventual public viewing. This crane was originally used by Henry Kaiser to build Grand Coulee Dam in 1935 and was moved to the Richmond Kaiser Shipyard No. 1 1941. The crane has been donated by Richmond Levin Terminal, and the relocation is a massive volunteer project.



The historic Whirley Crane weighs nearly 500 tons and will be moved via barge and a 500-ton crane from Manson Construction used for bridge construction and retrofit work

A grant from PG&E to the Rosie the Riveter Trust for \$50,000 over two years will fund various outreach programs targeted at the Richmond community, including a major community event in the spring of 2006.